


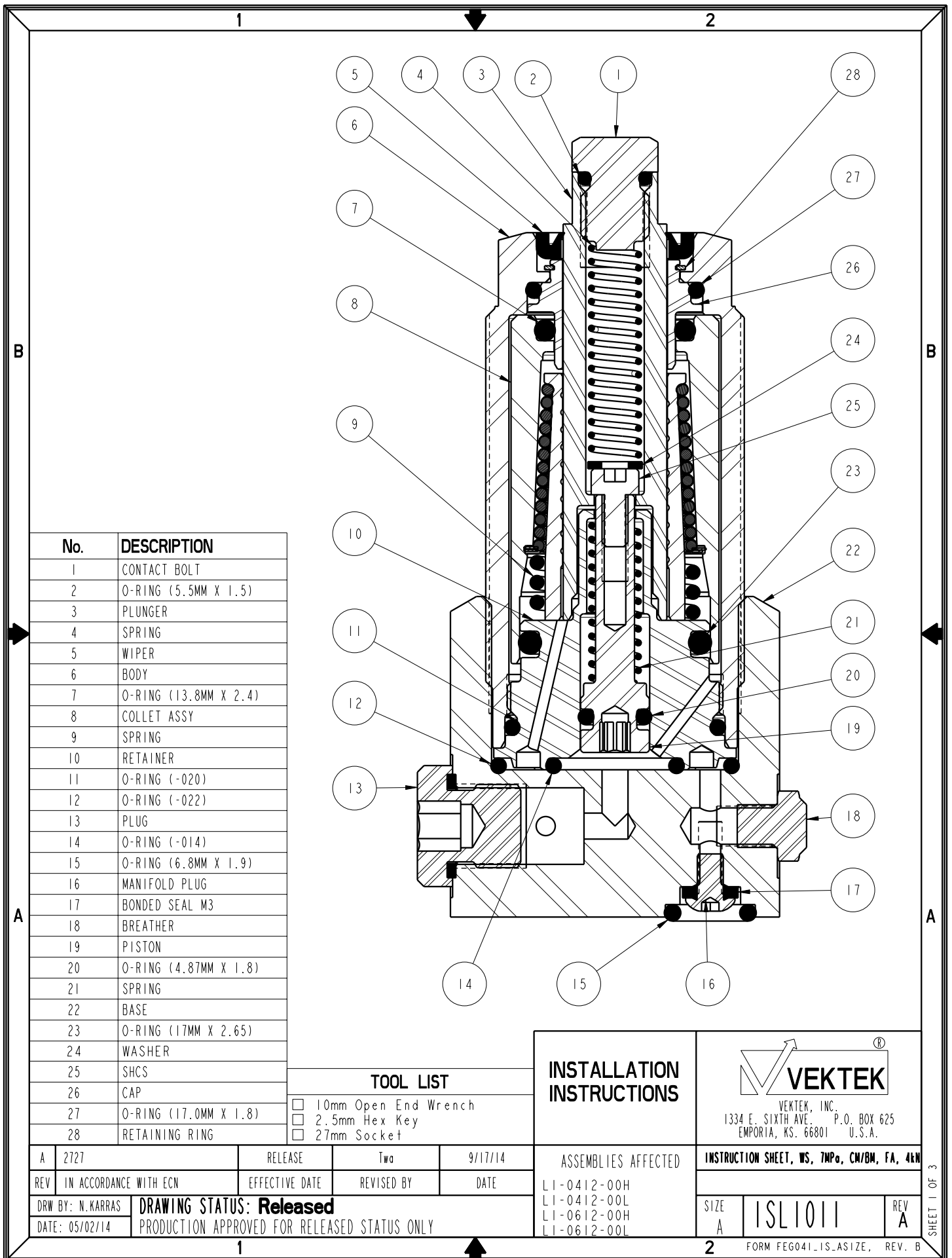
NO	QTY	PART NO	DESCRIPTION	STD SEAL KIT	LIGHT SPRING KIT	HEAVY SPRING KIT
1	1	23350099	SPRING, COMPRESSION		X	X
2	1	23350101	SPRING, COMPRESSION			X
3	1	39050085	O-RING, (-022)	X	X	X
4	1	39051107	O-RING, (4.87mm X 1.8)	X	X	X
5	1	39051108	O-RING, (5.5mm X 1.5)	X	X	X
6	1	39051114	O-RING, (-014)	X	X	X
7	1	39053050	WIPER, PRESS-IN, 12mm	X		
8	1	81000031	CONTACT BOLT, WS, 7MPa, 4kN			
9	1	23350100	SPRING, COMPRESSION		X	
N/A	N/A	L6010006	KIT, SEAL, WS, 7MPa, CM/BM, 4kN	NOTED	N/A	N/A
N/A	N/A	L6110012	KIT, SPRING, WS, 7MPa, CM/BM, FA, 4kN	N/A	NOTED	N/A
N/A	N/A	L6110013	KIT, SPRING, WS, 7MPa, CM/BM, FA, 4kN	N/A	N/A	NOTED
N/A	N/A	ISL1011	INSTRUCTION SHEET, WS, 7MPa, CM/BM, FA, 4kN	N/A	N/A	N/A

See Instruction Sheet ISL1011 For Service Instructions.  
 Lubricate All Seals With Clean Hydraulic Oil Prior To Assembly.  
 Do Not Use Silicone Base Lubricants.



<b>PARTS LIST</b>	 VEKTEK, INC. 1334 E. SIXTH AVE. P.O. BOX 625 EMPORIA, KS. 66801 U.S.A.
	<b>PARTS LIST, ASSY, WS, 7MPa, CM, FA, 4kN</b>
ASSEMBLIES AFFECTED L1-0412-00H L1-0412-00L	SIZE A <b>LPL1015</b>
REV B	

B	2846	RELEASE	Twa	05/01/15
REV	IN ACCORDANCE WITH ECN	EFFECTIVE DATE	REVISED BY	DATE
DRW BY:	Twa	<b>DRAWING STATUS: Released</b>		
DATE:	4/24/14	PRODUCTION APPROVED FOR RELEASED STATUS ONLY		



No.	DESCRIPTION
1	CONTACT BOLT
2	O-RING (5.5MM X 1.5)
3	PLUNGER
4	SPRING
5	WIPER
6	BODY
7	O-RING (13.8MM X 2.4)
8	COLLET ASSY
9	SPRING
10	RETAINER
11	O-RING (-020)
12	O-RING (-022)
13	PLUG
14	O-RING (-014)
15	O-RING (6.8MM X 1.9)
16	MANIFOLD PLUG
17	BONDED SEAL M3
18	BREATHER
19	PISTON
20	O-RING (4.87MM X 1.8)
21	SPRING
22	BASE
23	O-RING (17MM X 2.65)
24	WASHER
25	SHCS
26	CAP
27	O-RING (17.0MM X 1.8)
28	RETAINING RING

TOOL LIST	
<input type="checkbox"/>	10mm Open End Wrench
<input type="checkbox"/>	2.5mm Hex Key
<input type="checkbox"/>	27mm Socket

**INSTALLATION INSTRUCTIONS**

VEKTEK, INC.  
1334 E. SIXTH AVE. P.O. BOX 625  
EMPORIA, KS. 66801 U.S.A.

REV	IN ACCORDANCE WITH ECN	EFFECTIVE DATE	REVISED BY	DATE
A	2727	RELEASE	Two	9/17/14
DRW BY: N. KARRAS		<b>DRAWING STATUS: Released</b>		
DATE: 05/02/14		PRODUCTION APPROVED FOR RELEASED STATUS ONLY		

ASSEMBLIES AFFECTED  
 LI-0412-00H  
 LI-0412-00L  
 LI-0612-00H  
 LI-0612-00L

INSTRUCTION SHEET, WS, 7MPo, CW/BM, FA, 4kN	
SIZE A	ISL1011
REV A	

SHEET 1 OF 3



